



KISNA EXIA

GROUP OF COMPANIES

www.kisnaexiagroup.com

INTRODUCTION



We Craft Quality Polypropylene Mats for Every Need

WE ARE LEADING IN QUALITY POLYPROPYLENE MAT PRODUCTS

Kisna Exia is a trusted name in crafting durable and stylish plastic straw outdoor rugs and the best indoor outdoor area rugs that enhance any space.

Whether for homes, patios, deck, garden, beaches or RV camping, our polypropylene mats, rugs and carpets ensure top-notch designs, long-lasting performance, and unbeatable value.

Choose sustainability and innovation with our expertly designed flooring solutions

'Our Commitment' Delivering superior-quality plastic mats with a perfect blend of innovation, craftsmanship, and customer satisfaction.



Our Mission

To provide high-quality, long-lasting plastic rugs mats that combine durability, functionality, and customer satisfaction at every step.



Our Vision

To be a global leader in pioneering premium-quality, innovative plastic carpet solutions that redefine durability and functionality.



Core Value

Quality, innovation, customer focus, integrity, and sustainability guide our every product and decision.

WHY CHOOSE US ?



QUALITY FIRST

Rigorous quality control processes ensure that all the products meet the highest standards of performance.



CUSTOMER FOCUSED

Understanding your needs, we offer tailored solutions that add value and ensure satisfaction.



INNOVATION-DRIVEN

Commitment to integrate the latest technologies to create cutting-edge products.



SUSTAINABLE PRACTICES

Prioritizing eco-friendly manufacturing and sustainable product innovation.



DIVERSE EXPERTISE

Extensive experience and expertise across Plastic mats & rugs industry.



GLOBAL REACH

Delivering globally recognized products that meet the highest international standards.

ABOUT THE PRODUCT

Polypropylene mats are crafted using **100% virgin or recycled polypropylene granules**, ensuring a balance between durability and sustainability.

Unlike traditional rug fibres, this material is **UV-stabilized, waterproof and resistant to mold, mildew, and stains**, making it an excellent choice for indoor outdoor long-term use.

Additionally, the mats are available in a variety of colors, patterns, and designs, enhancing their aesthetic appeal while maintaining their structural integrity.

In the production of **polypropylene (PP)** mats different material compositions are used based on cost, durability, and sustainability considerations.

The key material options include:

1. Virgin Polypropylene (100% Pure PP)

- » Made entirely from 100% pure first-use polypropylene resin.
- » Superior strength, flexibility, and longevity
- » Bright, uniform colors with a smooth finish
- » Excellent UV and moisture resistance

Best For: Premium markets, export-quality mats products with high durability, and environments requiring superior aesthetics.

2. Recycled Polypropylene (Eco-Friendly Choice)

Premium Recycled PP: Sourced from high-quality industrial and post-consumer PP waste, thoroughly processed for uniformity and strength.

Regular Recycled PP: Sourced from general PP waste with less refinement, making it cost-effective but with some variations in texture and colour.

- » Environmentally friendly and cost-effective
- » Reduces plastic waste
- » Can still be durable with proper processing
- » Lower tensile strength compared to virgin PP
- » May have minor inconsistencies in color and texture

Best For: Budget-friendly markets, promotional mats, and eco-conscious consumers.

3. 50:50 Virgin & Recycled Polypropylene (Balanced Blend)

A balanced mix of virgin and recycled polypropylene for optimal cost and durability.

- » Offers a middle ground between quality and cost-effectiveness
- » Retains good durability while being more sustainable
- » Colors and texture are more consistent than fully recycled PP
- » Better strength and quality than fully recycled
- » Cost effective than 100% virgin PP.

Ideal for: Commercial applications, mid-range consumer markets, and buyers looking for both affordability and without significant compromise on quality.

Each option caters to different market demands, balancing quality, cost, and sustainability.

The rugs are manufactured in various weave qualities from 350 to 600 GSM and its thickness depends upon GSM. The mats with higher GSM provide enhanced strength and longevity compared to light weight alternatives.

These mats have breathable woven structure and a well-constructed mat features 4-sided edge finishing to prevent fraying and premature wear.

Edge finishing is done by Hemming and Tapping.

CM	Foot
90 x 150	3 x 5
90 x 180	3 x 6
120 x 180	4 x 6
150 x 210	5 x 7
150 x 240	5 x 8

CM	Foot
180 x 270	6 x 9
240 x 300	8 x 10
240 x 360	8 x 12
270 x 360	9 x 12
270 x 480	9 x 16

PRODUCT FEATURE

Polypropylene mats are designed to offer durability, convenience, and versatility, making them an excellent choice for both residential and commercial use. Here are the key features that set them apart:



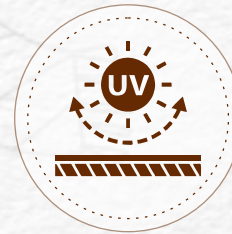
LIGHTWEIGHT



PORTABLE



WATERPROOF



UV STABILIZED



MOLD RESISTANT



DURABLE



STYLISH



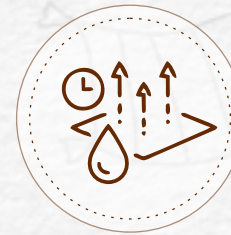
COMFORTABLE



REVERSIBLE



EASY TO CLEAN



QUICK DRY



ECO-FRIENDLY

APPLICATIONS



RV MAT



PATIO MAT



CAMPING MAT



PICNIC MAT



OUTDOOR MAT



ROUND MAT



BEACH MAT



DECK/PORCH MAT



POOL SIDE

PRODUCTION PROCESS

The production of mats involves several precise and high-tech steps to ensure consistent quality and performance:



RAW MATERIAL



COLOUR MIXING



EXTRUSION



PREPARING WARP



WEAVING



CUTTING & FINISHING



SEWING



QUALITY CHECK



STORING



SHIPPING

PACKAGING



FOLDED



BALES WITH STRAPS



FOLDED



CORRUGATED CARTON BOX



ROLLED



PDQ BOXES

The rugs are individually packed in LDPE poly bags and then either in HDPE bales, cartons boxes or PDQ boxes as per requirement.

CUSTOMIZATION OEM/ODM SERVICES AVAILABLE



BRAND LABELLING



SIZE OF PRODUCT

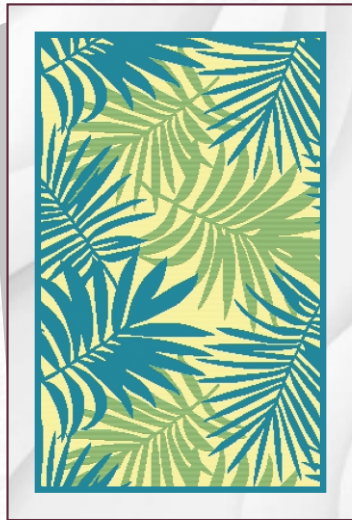


DESIGN & COLOUR



PACKAGING

TRENDING DESIGNS AND PATTERNS



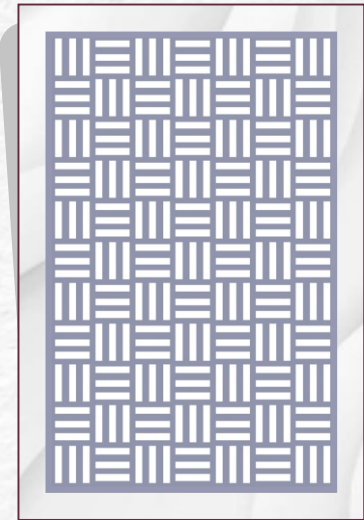
KE 01



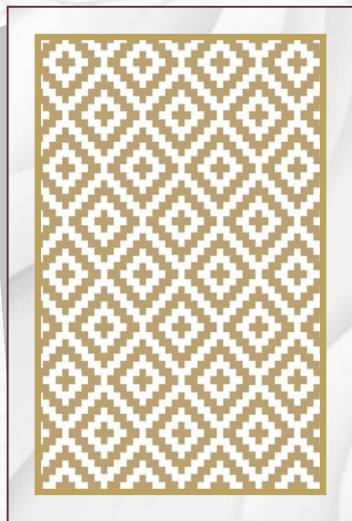
KE 02



KE 03



KE 04



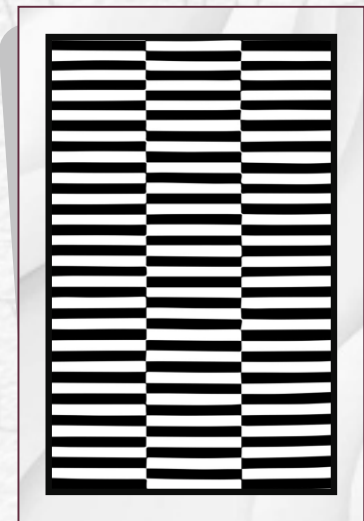
KE 05



KE 06

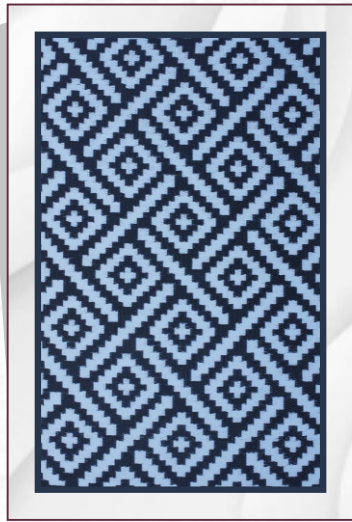


KE 07

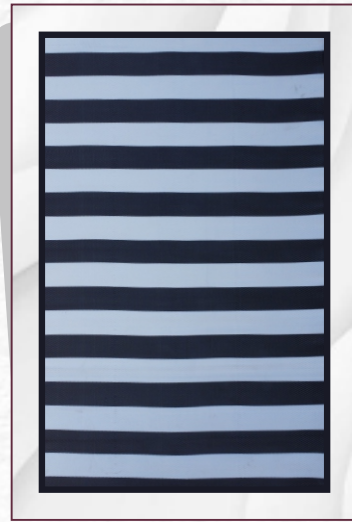


KE 08

TRENDING DESIGNS AND PATTERNS



KE 09



KE 10



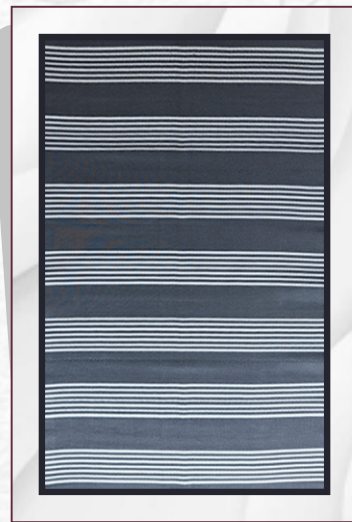
KE 11



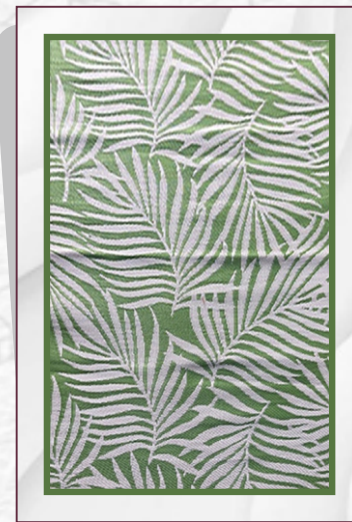
KE 12



KE 13



KE 14

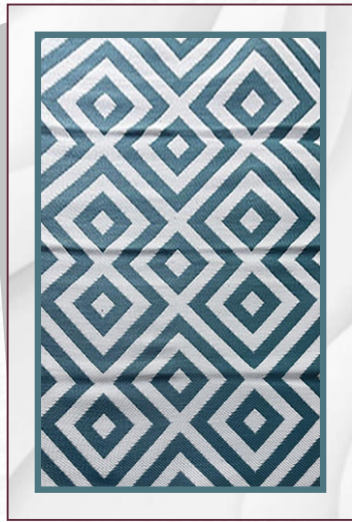


KE 15



KE 16

TRENDING DESIGNS AND PATTERNS



KE 17



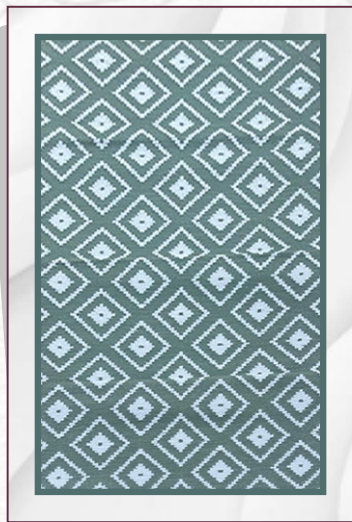
KE 18



KE 19



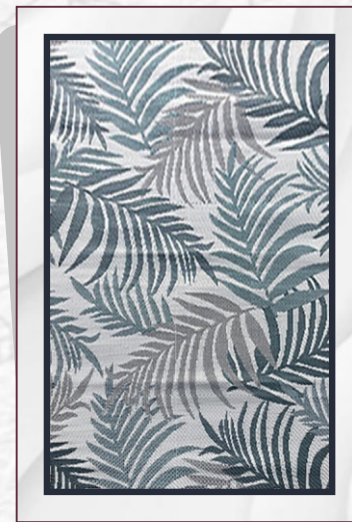
KE 20



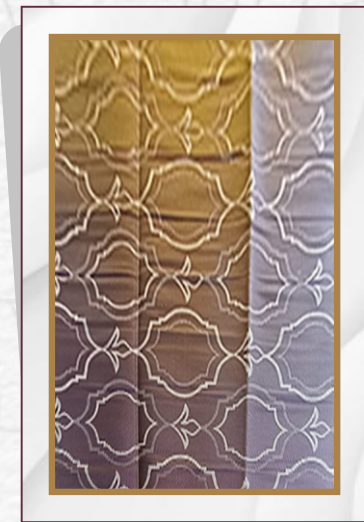
KE 21



KE 22



KE 23

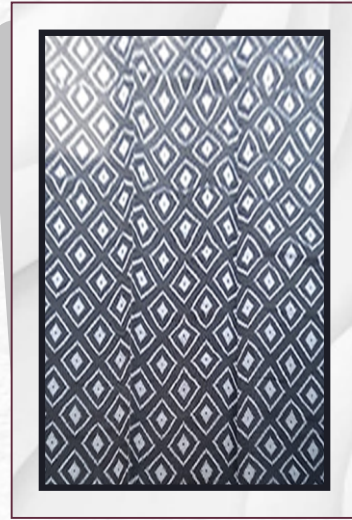


KE 24

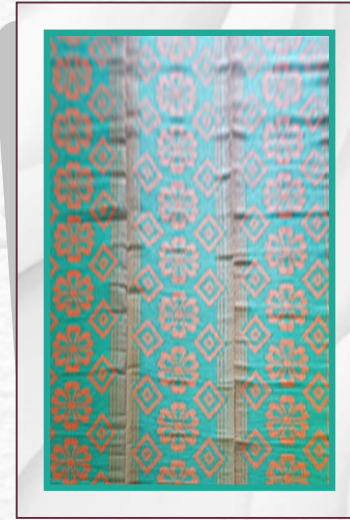
TRENDING DESIGNS AND PATTERNS



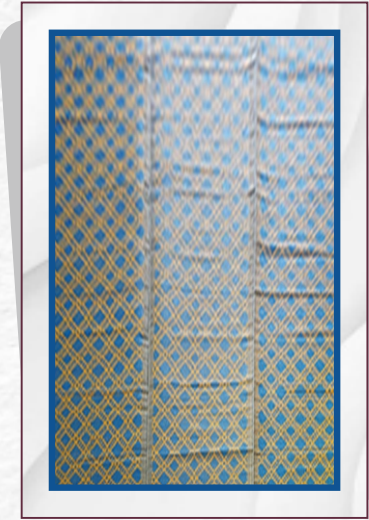
KE 25



KE 26



KE 27



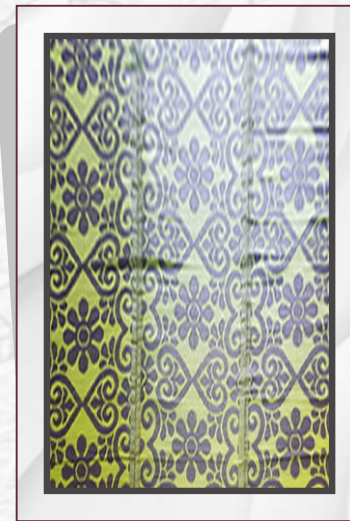
KE 28



KE 29



KE 30



KE 31



KE 32

TRENDING DESIGNS AND PATTERNS



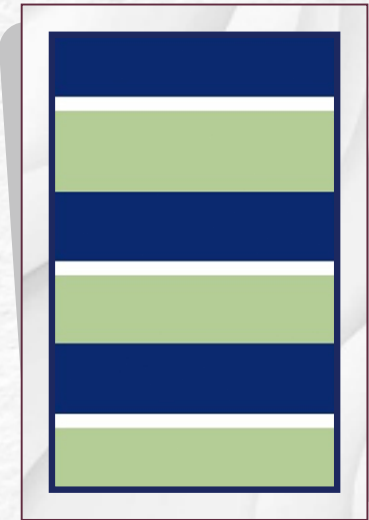
KE 33



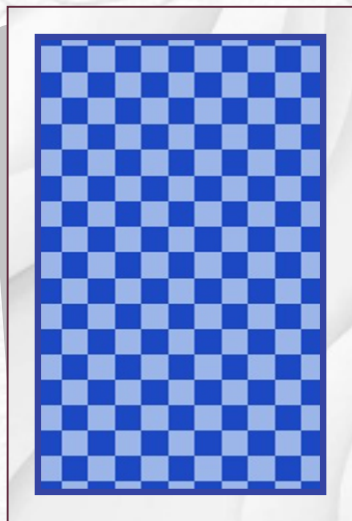
KE 34



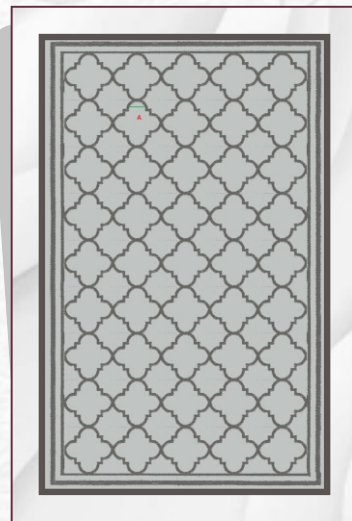
KE 35



KE 36



KE 37



KE 38



KE 39



KE 40

TRENDING DESIGNS AND PATTERNS



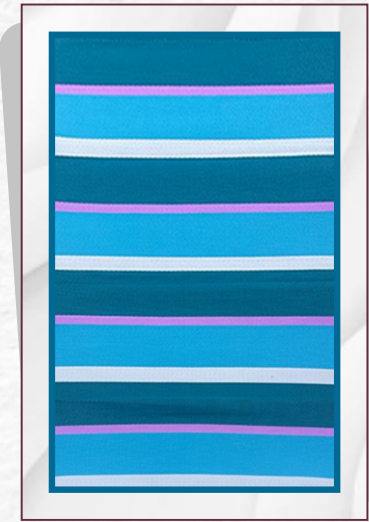
KE 41



KE 42



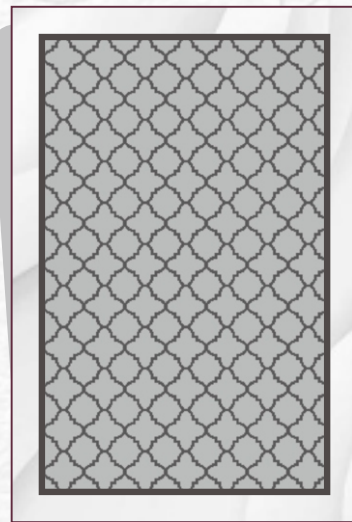
KE 43



KE 44



KE 45



KE 46



KE 47



KE 48



**2nd Floor, Shri Rudra Villa, Near Kamal Tea Depot,
New Plots, Amalner, Jalgaon Pin- 425401 Maharashtra, INDIA**

 **+91 94033 57555**  **prakkash@kisnaexiagroup.in**

